



BACKSTAGE AT Valentine Theatre

FALL 2019

OUR MISSION

The Toledo Cultural Arts Center, a non profit organization, produces and provides cultural and performing arts experiences for diverse audiences of all ages, to enhance the quality of the cultural and economic life of the City of Toledo, Lucas County, Northwestern Ohio and Southeast Michigan.

OUR HISTORY

The historic Valentine Theatre opened its doors on Christmas Day in 1895 and is currently a 901-seat facility operated by the Toledo Cultural Arts Center, Inc. Following a 21-year effort by the Board of Trustees and the community, the newly renovated theatre was reopened on October 9, 1999. Since then, more than a million people have attended international, national and regional presentations, weddings and events.

IT'S A SHELLEBRATION!

After months of planning, our new acoustical shell is finally installed and ready for its public debut! Designed and produced by the Wenger Corporation, the shell encompasses our Main Stage, significantly improving the sound quality of live musical performances. Zak Vassar, President and CEO of the Toledo Symphony, notes that previously a large percentage of the Symphony's sound would get lost in the 80-foot ceiling above the Valentine's Main Stage. Now, with the shell's walls and ceiling, the sound will move out into the audience and allow the musicians to hear one another.

According to Valentine Theatre Executive Director Jori Jex, when the theatre was renovated in 1999, the plan was always to one day incorporate an acoustical shell. Thanks to a generous grant from the **State of Ohio Facilities Construction Commission** and funding from **Owens Corning, Inc., The Andersons Fund Supporting Organization of the Toledo Community Foundation**, and the **Gorski Family Foundation**, we have been able to realize that long-held goal and provide an opportunity for the Valentine to build an even stronger partnership with the TSO.



Playing key roles in the shell's installation were **Tim Durham**, the Valentine Theatre's Technical Director; Assistant Tech Director **Joshua Smith**; Head Electrician **Deanna Yager**; Head Carpenter/Steward **George Segura**; and IATSE Technical Assistant for Shell Construction **Bobby Finkbeiner**. Additional thanks to **Greg Hanbaum** and **Mike Yocum** of the Wenger Corporation. Greg was instrumental in the shell's design, and Mike served as building construction director. To give you a sense of the vast scope of this construction project, local videographer Andrew Jex has created a fascinating video which you can access via the Valentine Theatre's Facebook page and website.

Toledo Symphony musicians under the direction of Music Director Alain Trudel tried out the shell at a private dedication in early September. We invite you to attend the TSO's Mozart in the Afternoon series to experience the acoustical difference! Concerts are Saturdays at 2 pm, October 12, January 11, February 29, and March 28. Tickets can be purchased through the TSO Box Office at 419-246-8000 or online at toledosymphony.com.



The Andersons Fund Supporting Organization,
Inc., of Toledo Community Foundation

Gorski Family Foundation



CONTACT US

 419-242-2787

 ValentineTheatre.com

 410 Adams Street
Toledo, Ohio 43604



A round of applause for our generous sponsors!



The Valentine Theatre's



Anniversary Season

Broadway Series

Once — Sun, Nov 10 @ 7 pm

Jersey Boys — Mon, Jan 27 @ 7pm

Finding Neverland—Mon, Mar 16 @ 7:30 pm

An American in Paris — Wed, Apr 8 @ 7:30 pm

The Color Purple — Mon, Apr 27 @ 7:30 pm

PROMEDICA Pick 4 Series

Black Violin — Wed, Nov 6 @ 7:30 pm

Mystery Science Theater 3000 — Tues, Nov 12 @ 7:30 pm

Dance Theatre of Harlem — Sat, Feb 15 @ 8 pm

The Tap Pack — Sun, Feb 23 @ 7 pm

The Choir of Man — Sun, Mar 1 @ 7 pm

KeyBank Valentine Theatre GALA



The Broadway Tenors

Saturday, April 25 @ 6:30 pm



Children's Series

The Velveteen Rabbit — Sun, Nov 3 @ 2 pm

The Call of the Wild — Sat, Nov 23 @ 2 pm

The Magic School Bus — Sat, Mar 21 @ 2 pm

THE BLADE

Classic Silver Screen Series

Young Frankenstein — Fri, Oct 11 @ 7:30 pm

It's a Wonderful Life — Fri, Dec 20 & Sun, Dec 22

Dracula and Frankenstein — Fri, Jan 10 @ 7:30 pm

This is Spinal Tap — Fri, Feb 28 @ 7:30 pm

Grease (sing-a-long version) — Fri, Mar 27 @ 7:30 pm

Studio A—Glass City Improv

The Monthly — Last Friday of Every Month @ 8:30 pm

The Regular — 3rd Friday of Every Month @ 8:30 pm

Tickets 419-242-2787 / valentinetheatre.com



Jane Friedman
Anspach Foundation



SHINDLER NEFF^{LLP}



We're Sprucing up the House!

New Drinking Fountains. Not only has our Main Stage received a facelift with the addition of an acoustical shell, but we have also installed brand new drinking fountains throughout the theatre. These new stainless-steel bubblers were made possible by a generous grant from the Toledo Rotary Foundation. Many thanks to Valentine Facilities Manager, Bill Colter, and Eddie Villarreal for all of their help in installing the new units just in time for the start of our 21st season.



Brand new stainless steel drinking fountains

State-of-the-Art Assistive Listening Devices. A grant from the Andersons Fund Supporting Organization of the Toledo Community Foundation will allow us to purchase updated assistive listening devices. The new devices will be available to the public later this fall. We are thrilled to be able to offer our guests the very latest in hearing assisted technology to ensure that their experience at the Valentine is the best it can be. If you require hearing assistance, please contact our Box Office 24 hours in advance or ask an usher the night of the performance.



TRAVEL LOG



This past summer, the Valentine's Kelby Sodeman went on a walking tour of southeast England, traveling from Winchester (about an hour southwest of London) east to Canterbury (near the coast and not far from the Cliffs of Dover). Along the way she had the opportunity to visit a few of England's historic theatres. One of her favorites was the Theatre Royal in Winchester. Built in 1850, the theatre was originally a hotel used by local farmers as a stopover on their way to sell cattle at the Corn Exchange in Winchester. At the turn of the 20th century the building was converted into a cine-variety venue featuring live acts, silent films and newsreels. In 1924 the theatre became a full-time cinema. During WWII local residents would gather in the theatre's auditorium to watch the news from the front lines. Similar to the Valentine, the Theatre Royal fell into disrepair in the 1960s and 1970s and was slated for demolition in 1974. Fortunately, a group of local thespians recognized the theatre's historic significance and importance to the cultural life of Winchester and stepped in to rescue her. Four years later the theatre was reopened, restored to its former glory.

The Theatre Royal Winchester over the Centuries



As the Market Hotel in 1890



In the mid-20th century



Today

Today, the Theatre Royal welcomes 70,000 visitors a year and supports up to 300 young people in arts activities throughout the year. Since its reopening in 1978 the theatre has undergone several additional renovations, including a 5-year period from 1996-2001 when the building was closed to restore many of its period features. While Kelby was there this summer, the theatre was closed for another capital improvement. This time to expand and refurbish the front-of-house area, adding a café bar which will be open to the public year-round. According to Matthew Honey and Shain Hunter, Front of House Duty Managers at the Theatre Royal, it is hoped that the café bar will bring in additional revenue and serve as a gathering spot for the community during the daytime. If you want to learn more about Winchester's historic Theatre Royal, please visit their website theatreroyalwinchester.co.uk or Facebook page. It's exciting to see other historic theatres in the world thriving and bringing the thrill of the arts to their communities.




Front-of-House Duty Managers Matthew Honey and Shain Hunter selling season subscriptions



Renovated Main Stage / Auditorium 400-seat capacity



Newly refurbished Café Bar which opened in September 2019

 VALENTINE STAFF

JORI JEX
Executive Director

MATT LENTZ
Director of Marketing & PR

TIM DURHAM
Technical Director

RUTH KILLE
Finance Director

JOSHUA SMITH
Assistant Technical Director

BILL COLTER
Facility Manager

Maggie Dowd
Manager of Support Services

DAN HEBERLING
Events & Catering Manager

AMY SPAULDING-HEURING
Box Office Manager

KELBY SODEMAN
*DEVELOPMENT COORDINATOR &
VSD COORDINATOR*

BOARD OF TRUSTEES

BRIAN C. BROWN, CHAIR

JAMES STENGLE, VICE CHAIR

ALAN KLINE, TREASURER

JENNIFER COY, SECRETARY

CARROLL ASHLEY

R.L. BERRY

CHARLENE GILBERT

CLARE GORSKI

DOUGLAS E. KEARNS

JANE KERVIN

NANCY METZGER

KRISTIN NICHOLSON

DONNA OWENS

THOMAS PALMER

DAVID RECTENWALD

MARC STOCKWELL

TRACI WATKINS, M.D.

KEVIN WEBB

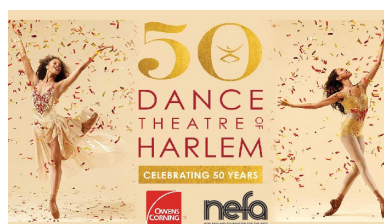
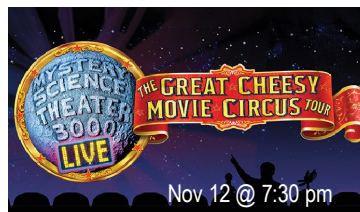
WILLIAM M. WOLFF

TINA SKELDON WOZNIAK

Non-Profit Org
U.S. Postage
PAID
Toledo, OH
Permit No. 660

 PROMEDICA PICK 4 SERIES

The Valentine Theatre is proud to welcome ProMedica as the sponsor of its Pick 4 Series. Eclectic, artistic and dynamic, the Valentine's Pick 4 Series is not to be missed! The Series kicks off November 6 with **Black Violin**. Led by classically trained string players Wil B on viola and Kev Marcus on violin, and DJ SPS and drummer Nat Stokes, Black Violin blends classical and hip-hop music to create a unique blend called "classical boom". Other Pick 4 shows include the incomparable **Dance Theatre of Harlem**, cult-comedy favorite **MST 3K Live**, the phenomenal **Tap Pack** dancers, and fan favorite, **Choir of Man**. Whatever your interests are, there's a Pick 4 show for you! Tickets are available online or through our Box Office 419-242-2787.



Feb 15 @ 8 pm



Mar 1 @ 7 pm